

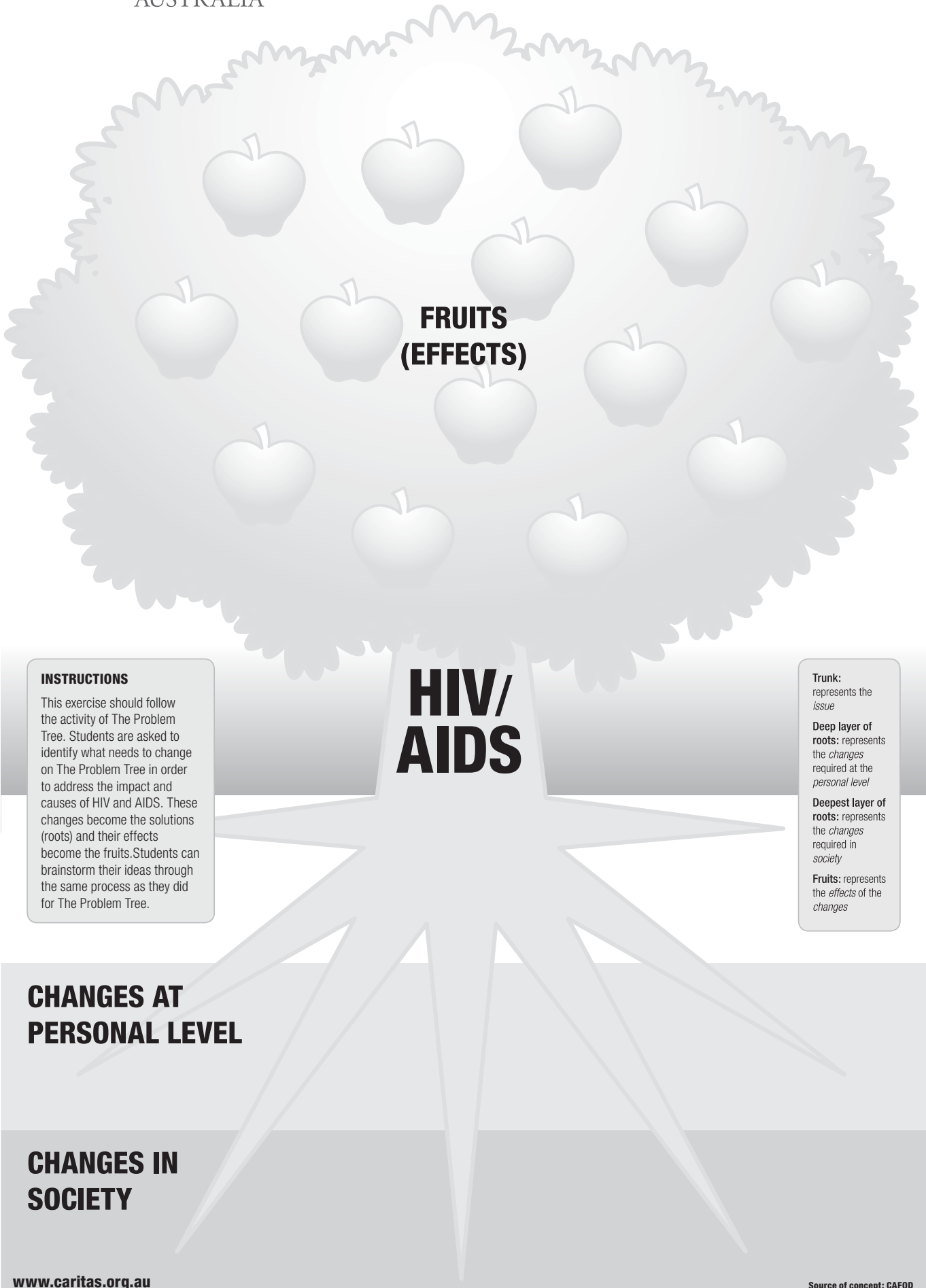
Trunk: represents the *issue*

Branches: represent the *impact on individuals and society*

Surface roots: represent the immediate causes of *risk activities*

Deeper layer of roots: represents the situations that make people *personally vulnerable* and expose them to risk

Deepest layer of roots: represents issues that make societies vulnerable



INSTRUCTIONS

This exercise should follow the activity of The Problem Tree. Students are asked to identify what needs to change on The Problem Tree in order to address the impact and causes of HIV and AIDS. These changes become the solutions (roots) and their effects become the fruits. Students can brainstorm their ideas through the same process as they did for The Problem Tree.

Trunk: represents the *issue*

Deep layer of roots: represents the *changes* required at the *personal level*

Deepest layer of roots: represents the *changes* required in *society*

Fruits: represents the *effects* of the *changes*

**CHANGES AT
PERSONAL LEVEL**

**CHANGES IN
SOCIETY**

SOCIAL IMPACTS

**Impact on girls/women
(further gender inequalities)**

- Care for sick family members
- Often miss out on educational opportunities (making them more vulnerable to HIV and AIDS)
- Often forced into sex work to provide an income so their family can survive

Orphans and vulnerable children

- Children experience a loss of parental support
- May have to leave school to support their family
- Loss of childhood as they take on adult responsibilities
- Grandparents, particularly grandmothers, take on additional responsibilities and become primary care-givers for their grandchildren

Stigma and discrimination

- People living with HIV are often ostracised from their family and communities
- Social death occurs before physical death

PSYCHO-SOCIAL IMPACT

- Repeated trauma of losing parents, siblings, children

ECONOMIC IMPACTS

- People become infected with HIV in the prime of their working lives – impacts on productivity and income
- Reduced labour force as people become too sick to work
- With reduced labour, price of goods rise
- Loss of professional/technical skills
- Continual need to invest in training

DRAIN ON HEALTH RESOURCES

- What is the criteria for accessing anti-retroviral drugs?

CULTURAL IMPACTS

- Reduced life expectancy results in lack of sharing traditional knowledge eg regarding farming techniques

**HIV/
AIDS**

Sex Blood

Sharing needles

Mother-to-child transmission

Trunk: represents the *issue*

Branches: represent the *impact* of HIV and AIDS on *individuals* and *society*

Surface roots: represent the immediate causes of *risk* activities

Deeper layer of roots: represents the situations that make people *personally* vulnerable and expose them to risk

Deepest layer of roots: represents issues that make *societies* vulnerable

Sexual violence Lack of educational opportunities Stigma and discrimination

Lack of income Substance misuse Child-headed households Movement Lack of medicine

Loss of family/social support Myths and superstition Lack of food Sex work

Gender inequality Poverty

Unfair legal and political systems

Culture War/conflict

